

MetaStock QuoteCenter

QUICK REFERENCE GUIDE



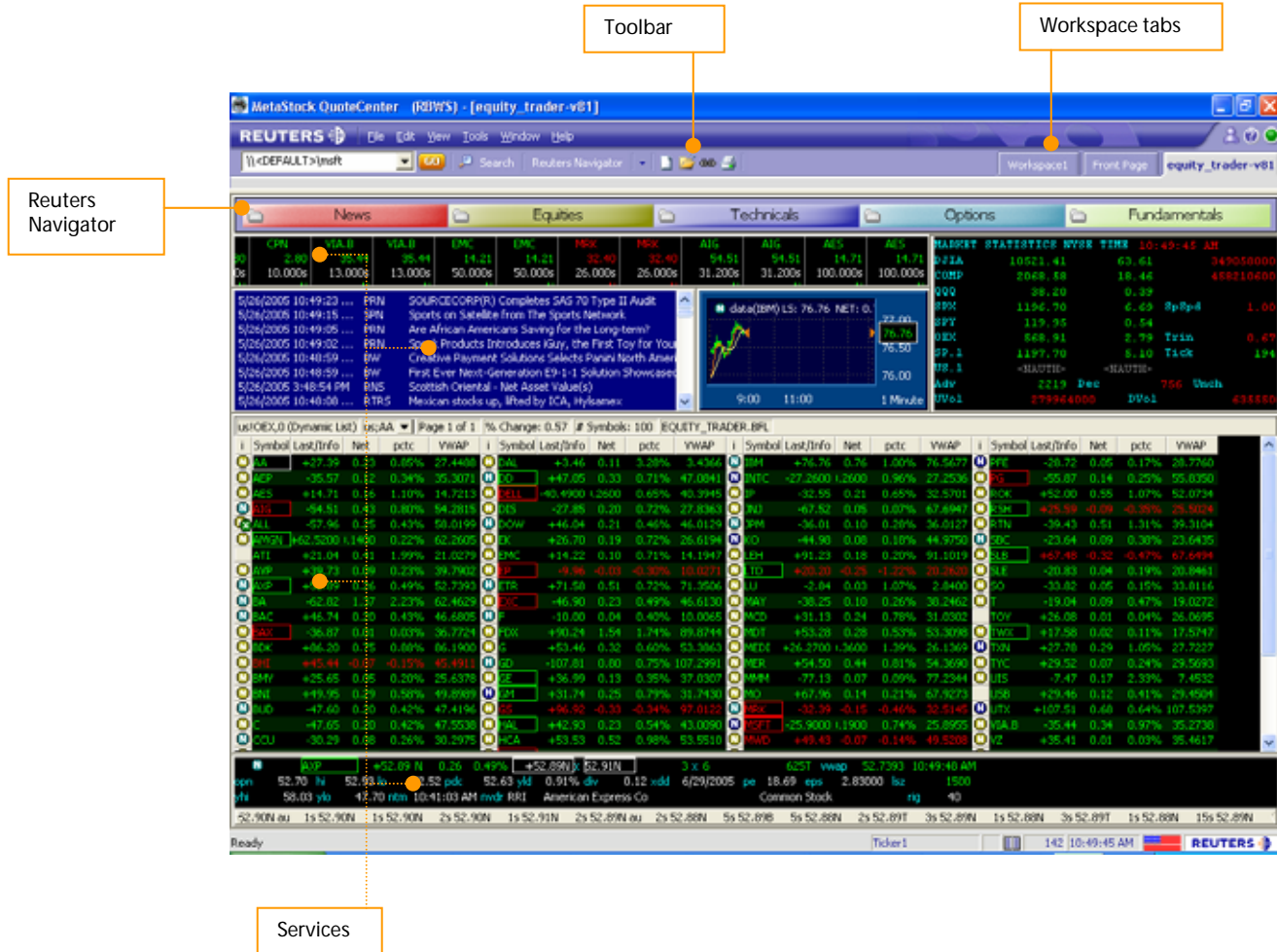
TABLE OF CONTENTS

➔	GUIDED TOUR	4
➔	HOW DO I	8
	...GET STARTED WITH PRE-BUILT WORKSPACES AND WORKBOOKS?	8
	...AUTOMATICALLY OPEN WORKBOOKS ON STARTUP?	8
	...AUTOMATICALLY SAVE MY WORKSPACES?	8
	...SAVE MY WORKBOOK?	9
	...REORDER WORKSPACE TABS?	9
	...SHOW MID IN PREFERENCE TO LAST SALE?	9
	...SHOW ZERO PRICES?	9
	...SHOW PRIMARY EXCHANGE IN PREFERENCE TO COMPOSITE	9
	...ACCESS A QUICK APP?.....	9
	...SAVE THE SIZE AND POSITION OF A QUICK APP (Pop-Up)?.....	9
	...ADD A SERVICE TO A WORKSPACE?	9
	...REMOVE A SERVICE FROM A WORKSPACE?.....	9
	...CHANGE FONT SIZE AND FONT STYLE?	9
	...SAVE SERVICE STYLES?.....	10
	...ADD/CHANGE HOT KEYS?	10
	...SHOW TOOLBARS IN A SERVICE?	11
	...OPEN A REUTERS NAVIGATOR?.....	11
	...FIND INFORMATION WITH THE REUTERS NAVIGATOR?	11
	...SEARCH FOR ITEMS/COMMANDS USING THE REUTERS NAVIGATOR	
	12
	...FIND NEW ITEMS/COMMANDS ADDED TO REUTERS NAVIGATOR...	12
	...CREATE A PERSONAL NAVIGATOR?	12
	...ADD A DOUBLE CLICK ASSIGNMENT?	13
	...WORK WITH TEMPLATES?	14
	...WORK WITH SYMBOL LISTS?	14
	...CREATE A VISUAL LINK.....	15
	...DELETE A VISUAL LINK ?	15
	...MONITOR SYMBOLS?	18
	...LOAD SYMBOLS CHAINS INTO A MARKETWATCH?	18
	...RETRIEVE NEWS?.....	19
	...RETRIEVE NEWS ON A SPECIFIC SYMBOL?	19
	...SEARCH FOR NEWS STORIES?	19
	...SAVE NEWS SEARCHES (NEWS PROFILES)?	20
	...ACTIVATE AN EXISTING PROFILE	20
	...DEACTIVATE AN ACTIVE PROFILE.....	20
	...SEARCH USING THE NEWS EXPERT – FOR KEYBOARD INTENSIVE	
	USERS.....	21
	...ACCESS FIXED STORY NUMBERS?.....	22
	...IDENTIFY NEWS INDICATORS?.....	23
	...GET A CHART?.....	23
	...CREATE AN ATHENA CHART?	23
	...ADD A STUDY TO A CHART?	23
	...ADD A PREFORMATTED CHART TEMPLATE?	23

...ADD MORE SYMBOLS TO MY CHART?	23
...SAVE CHARTS, TEMPLATES, STUDIES OR PANES?	23
...SELECT DRAWING TOOLS?.....	23
...CHANGE CHART TIME RANGE?	24
...ADD A TOOLBAR TO A CHART?.....	24
... SEND A SYMBOL TO MULTIPLE SERVICES AT SAME TIME?	24
...LOOK UP SYMBOLS?.....	24
...GET FUNDAMENTAL AND PERFORMANCE DATA ON A COMPANY?	24
...GET TRADING TECHNICALS?.....	24
...SET UP AN ALERT?	24
...GET NASDAQ LEVEL 2 DATA?	25
...IMPORT DATA INTO EXCEL?.....	25
...GET TIME AND SALES?	25
...FIND ALL ISSUES FOR A COMPANY?	25
...FIND SPECIFIC INDUSTRY INFO?	25
...FIND INDICATIONS OF INTEREST?	25
...ADD WEBSITES TO A WORKSPACE?	25
...CALCULATE VWAP?	25
➔ Appendix -.....	26
COUNTRY CODES.....	26
HOT LINKS	27
SYMBOL STATUS INDICATORS	28
File Extensions.....	29
COMMONLY USED SYMBOLS	30
Indices	30
Near Term Most Active Futures.....	31
Other Indices	32
Cross Currency	33
Fixed Income Indices	33
Money Markets	35
Market Indicators	35
Getting Help	36

➔ GUIDED TOUR

Welcome to MetaStock QuoteCenter, the premier desktop for equity trading, portfolio management, and research. What makes MetaStock QuoteCenter different? The dashboard-like structure lets you quickly access the information you need. Click or drag symbols or entire symbol lists to individual applications or broadcast a symbol to many services at once. The logical 'view and do' workspaces, included with your system, get you up and running right out of the box. You'll be navigating like a pro in no time.



This guide is divided into three sections.

The **Guided Tour** is designed as an introduction to the different components of MetaStock QuoteCenter. The **How do I...** section provides hints and tips for frequently used functions. The **Appendix** provides reference items you will regularly use.

CONTAINER

The Container acts as a display space and handles launching services, symbol transfer, saving and restoring workspaces and workbooks, hot key mapping and linking of services.

WORKBOOK

The workbook is the collection of workspaces you want to use on a regular basis. You can load an unlimited number of workspaces into a workbook, as well as save any number of workbooks.

WORKSPACES

Workspaces are the areas that hold the services that aid in your daily workflow. Either pre-defined workspaces can be opened or you

can create and save your own. You can save an unlimited number of workspaces. Both pre-defined and user created workspaces can be customized to modify placement and properties of MetaStock QuoteCenter services. Workspaces may also be displayed outside of the container as a popup.

WORKSPACE TABS

Workspace tabs are located in the upper-right corner of the screen by default. Switch between workspaces by left clicking on the tab.

SERVICES

Services are the applications such as MarketWatch, Athena and NewsWatch. You can customize these services for the type of data you wish to view. One or more services can be assigned to each workspace. The services you can use are determined by which package you purchased from Equis. To make a service 'active', left-click on the service. Services have their own title bar, which can be turned off to maximize the display area. Services can either be embedded into a workspace or used temporarily as pop-up windows when needed.

MENU BAR

The menu bar contains the menus that enable you to set up the appearance and properties of services, access online help and create or edit workspaces. It is part of the container and appears at the very top of the screen.

TOOLBARS

Three types of toolbars are available:

Main toolbar

The main toolbar appears under the menu bar and contains icons for some of the more often used functions that appear in the menu bar. The icons provide quicker access to these functions, such as opening workspaces and printing services. Tool tips are visible when you rest the pointer over a selected icon.

Service toolbars

Service toolbars are the individual toolbars associated with each service. They offer access to the most commonly used functions, and vary according to the characteristics of each display. Only the toolbar for the active service is visible at any moment. Most service toolbars are turned off by default. Users are encouraged to use toolbars for quick access to various features. To view service toolbars, click **View > Allow App Toolbars** from the menu bar. Then in the application you want to display the toolbar, right-click and select **Toolbar**.

Communications Toolbar

The Communications toolbar is located in the upper right corner of the product. Click an icon to access the communication services you want.



Indicates if the connection to the server is active. The green light indicates connection to server is connected. A red light indicates the server connection is down.



Click on the icon to get helpful information

BROADCAST BOX AND GO BUTTON

Found in the upper left corner of the desktop, the broadcast box is used to send a symbol to multiple services in the workspace at one time. Type the symbol into the box and press the Enter key on your keyboard or click the GO button



DOUBLE-CLICK ASSIGNMENTS

Hot links - Double-clicking on individual data fields launches a hot link that displays a pop-up with information relevant to that field. For example, double-clicking on the dividend field displays dividends paid by that company whose symbol is active. For a list of standard double-click assignments turn to the Appendix of this guide.

Master Menu - Right-clicking on a symbol and selecting **Navigate** in any dynamic application will display a comprehensive menu with all the available features and functions for that particular service package.

CONTAINER STATUS BAR

The status bar appears at the bottom of the screen. It presents information for

1. Action currently being performed, such as Opening a workspace
2. Number of 'marked' symbols being actively updated in the workbook
3. Default country flag (sets the primary country of securities you want to monitor) Single-click on the country flag to change workstation settings, such as default country code and vehicle class, composite or primary exchange, and workstation password.
4. Reuters Logo – Single-click on the Reuters logo to access additional workstation settings such as **Last Workbook on Start Up, Auto Save Workspaces** and color changes.

...APPLICATION STATUS BAR –

Each dynamic service has an optional status bar which can be turned on or off via the shortcut menu or the properties dialog. The status bar shows symbol list name, drop-down list of symbols from which selections can be made, % Change, dates, number of pages, and the template that is loaded. The status bar enables drag and drop of symbol lists, simply hover over the list name and hold the mouse key down and drag that list to another service.

STYLES

Each service has the ability to save "Styles" which are user-defined preferences for a service. Styles can be saved for the two types of service objects; embedded services and pop-up services.

A user can set the fonts, window position (for pop-ups), properties as well as commands. For example, if you want the time & sales service to always display just the last sale, volume, and time, set the preferences then save that style. The user can have multiple styles for each service. Several styles are included by default with the installation.

DRAG AND DROP

Symbols and symbol lists can be dragged from one service to another to retrieve data. Symbols may also be dragged to other applications, such as Excel.

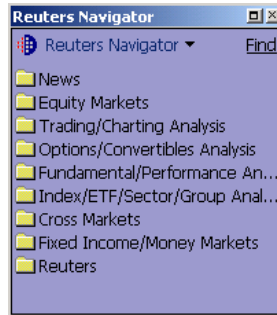
VISUAL LINKING

Visual Linking is a powerful tool used to customize the container. The Visual Linking wizard makes it easy to enhance the functionality of services and to perform tasks at the click of a button. No programming experience is necessary as the wizard automatically writes the code for you.

REUTERS NAVIGATOR

The Reuters Navigator is a user-configurable set of buttons that enables you to quickly access your favorite MetaStock QuoteCenter commands and functions. The Reuters Navigator comes with a predefined, read-only set of buttons. However, you can create your own Personal Navigator(s) by using some or all of the predefined items from the Reuters Navigator. The Navigator can be displayed as a menu, button panel, or as a toolbar. In menu mode, the commands can be collapsed or expanded from their folder. In toolbar mode, the commands appear as a pop-up menu when their folder (or button) is selected. You can place a Navigator anywhere in a workspace or it can be floated outside the container as a popup. When you click an option on the Navigator, the service, such as an Analytics chart or other service appears in the workspace.

The Reuters Navigator files are stored in our Central System and are downloaded when you start-up. This means that Reuters can add new features and make improvements centrally and you receive the changes as soon as they are available. When the new navigator is available, it is automatically downloaded to your workstation where you will be notified that a new Navigator is now available. You can easily search for the new items that will appear in red text or search for items with the “find” function.



➔ HOW DO I...

...GET STARTED WITH PRE-BUILT WORKSPACES AND WORKBOOKS?

MetaStock QuoteCenter comes with many pre-configured workspaces and workbooks to help you get started. To open a workspace, click **File > Open Workspace...** from the menu bar. To open a workbook, click **File > Open Workbook...** These give you a jump-start on using MetaStock QuoteCenter. Each workspace and workbook was created based on the type of tasks you need to accomplish everyday. Start with the workspaces or workbook that most closely fit with your daily workflow, then customized to your particular requirements. This table is not all inclusive and not all workspaces described here are available in every MetaStock QuoteCenter package.

Workspace	Description	Workbook			
		Trading	Sector	Port Mgr	Other
Analytics-v81	Workspace with an analytics window, Navigator, NewsWatch and a QuoteLine. This is the 'base of operation' for corporations, or anyone doing single-security analysis or research. A virtual search engine page for content and functionality, via the Reuters Navigator.	*		*	
Equity_trader-V81	Use this workspace for price discovery and to track news developments. This workspace can be used as a traders "base of operation". Contains QuoteLine, MarketWatch, Ticker, Time and Sales, and Athena displays.	*			
Etf_nav-v81	Exchange Traded Funds workspace with corresponding Net-Asset-Value Vehicles.		*		
Fundamental-v81	Workspace with a MarketWatch that exposes all the fundamental fields available, as well as some performance fields.			*	
Portfolio	This workspace contains the displays that you need to track your portfolio including NewsWatch, and MarketWatch with a customized template for tracking your positions against the market.			*	
All Futures	Focus on the Futures market with this workspace that contains several different MarketWatch displays.		*		
QC FOREX	This workspace helps you drill down into the FX market by providing a Foreign Exchange Cross Reference Table, MarketWatch screen containing a currency symbol list and the Foreign Exchange News screen.				*

After you choose to use a pre-defined workspace, it is a good idea to save it under a new name so you can customize it. From the **File** menu, choose **Save As...** and type the name you want to give the workspace.

...AUTOMATICALLY OPEN WORKBOOKS ON STARTUP?

You can set MetaStock QuoteCenter to automatically open up your workbook. On the menu bar, select **View > Workstation Settings**. When the workstation settings dialog appears, select the checkbox. **Load Last Workbook on Startup**.

...AUTOMATICALLY SAVE MY WORKSPACES?

To automatically save your workspaces, symbol lists and templates when you exit the system, click **View > Workstation Settings** on the menu bar. When the workstation settings dialog appears, select the **Auto Save Workspace Changes on Shutdown** checkbox or **Auto Save Workspaces Every...Min**. Enter the number of minutes before clicking **OK**.

...SAVE MY WORKBOOK?

To save a group of workspaces as a workbook:

1. Click **File > Save Workbook** from the menu bar
2. If this is a new workbook, you will be prompted to enter a name.
3. Click **OK** to complete.

Open pop-up's are saved as part of the workbook.

...REORDER WORKSPACE TABS?

1. Right-click on a workspace tab.
2. Select **Reorder tabs....** The **Reorder Tabs** dialog appears.
3. Drag the tabs to place them in desired order.
4. Click **OK** when done

...SHOW MID IN PREFERENCE TO LAST SALE?

This global option specifies whether mid prices are to be displayed in preference to the default setting, last sale.

1. Double-click on the country flag found on the status bar.
2. Select **Show Mid Over Last Sale** checkbox.
3. Click **OK** to complete.

...SHOW ZERO PRICES?

This option specifies whether zero changes/percentage changes should be indicated on screen.

1. Double-click on the country flag found on the status bar.
2. Select **Show Zero Prices** checkbox.
3. Click **OK** to complete.

...SHOW PRIMARY EXCHANGE IN PREFERENCE TO COMPOSITE


When this option is turned on, all quotations for the entire workstation are quoted from the prime exchange only. The ticker is still consolidated, but data elements that are exchange-specific are restricted to the prime exchange.

1. Double-click on the country flag found on the status bar.
2. Select **Show Primary Exchange Over Composite** checkbox.
3. Click **OK** to complete.


...ACCESS A QUICK APP?

Quick Apps are free-floating pop-up services. Typically, you run a Quick App on an ad hoc basis. Quick Apps are not saved as part of a workspace, but can be saved as part of a workbook. To use a Quick App:

1. From the **View** menu, select **Popup Controls**.
2. Select the application you want from the cascading menu.

Or click on the  found on the main toolbar

...SAVE THE SIZE AND POSITION OF A QUICK APP (Pop-Up)?

1. To change to size of the pop-up, place you mouse on the border of the pop-up. When the  appears, hold the left mouse button and drag the edge of the pop-up to the desire size. Repeat on each side as needed.
2. To change the position of the pop-up, place mouse over the title bar area of the pop-up. Hold the left mouse button and drag the pop-up to its desired location.
3. Right-click on the Title Bar of the Pop-up to display menu.
4. Select **Save as default...**

...ADD A SERVICE TO A WORKSPACE?

To add a display to any workspace, double-click on a blank area of a workspace or from the **Edit** menu, select **Add Display...**

...REMOVE A SERVICE FROM A WORKSPACE?

1. Click the display to be removed.
2. On the menu bar click **Edit > Delete**.

...CHANGE FONT SIZE AND FONT STYLE?

Each display's fonts can be set independently. To change a font size or style, right-click within the display you wish to change. Select **Properties** and the name of the display (e.g. MarketWatch) from the cascading menu. Click on the **Font** tab and make your changes. Click **OK** when finished.

...SAVE SERVICE STYLES?

A user can set the fonts, window position (for pop-ups), properties as well as commands. For example, if you want the time & sales service to always display just the last sale, volume, time, set the preferences then save that style. The user can have multiple styles for each service. Several styles are included by default with the installation.

To Save a Style for an embedded service:

1. Set the service to how you want it displayed.
2. Click **Edit** on the menu bar
3. Select **Save Style of Selected Control**
4. Enter a name for the style. (To set the style as your default, click the **Set as Default** check box)
5. Click **OK** to complete.

To Save a Style for Pop-Up

1. Set the pop-up service to how you want it displayed.
2. Right click on the services title bar and select **Save as Default** (or Apply Style to Pop-up). You can apply any saved style to a pop-up service by selecting from the Apply Style to Pop-up list available from the right-click menu)

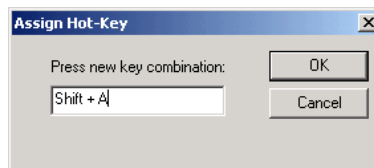
...ADD/CHANGE HOT KEYS?

MetaStock QuoteCenter is installed with a set of pre-assigned Hot Keys for your use. These keys can be overwritten and you can make your own assignments using other keys. To see the list of Hot Keys that come pre-assigned with your workstation, click **Tools - > Hot Key Assignment** from the menu bar.

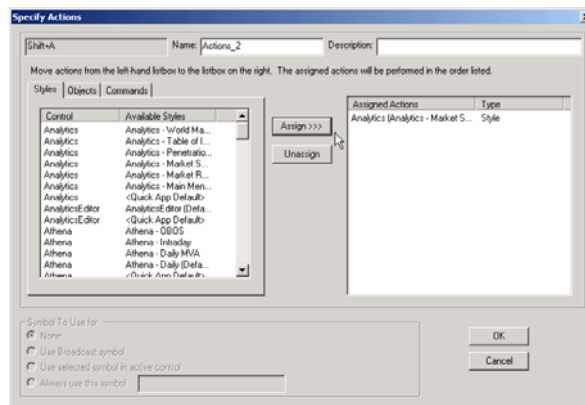
When making Hot Key assignments, you can use functions keys and other key combinations using the Shift, Ctrl, and Alt keys. The default hot keys can be overwritten with new assignments, but cannot be removed. You can set the action of the hot key to perform one or more different actions.

To assign a hot key:

1. Click **Tools -> Hot Key Assignment...** from the menu bar.
2. When the **Hot Key Assignment** dialog appears, click on the **New** button.
3. The **Assign Hot Key** dialog appears. Using your keyboard, enter the key combination you want to assign. Click **OK**.



4. The **Specify Actions** dialog appears. Enter a description in the box provided at the top right. Select the style or command assignment from the scroll box on the left, and click the **Assign>>>** button.



5. If required, click on the newly Assigned Action and select which symbol the service should use from the radio buttons in the lower left corner.
6. Select additional actions as needed.
7. Click **OK** then click **Close** and test your Hot Key.

Editing a Hot Key

Only hot keys you have assigned on your workstation can be edited. Hot Keys that come assigned with the workstation cannot be edited but can be overwritten by using the Assign a Hot key shown above.

1. Open the Hot-Key Assignment editor under **Tools -> Hot-Key Assignment...**
2. Select the hot key you want to alter and click the **Edit** button.
3. Enter a new description in the box provided at the top right and make your required edits.
4. Click **OK** then **Close** and test your Hot Key.

You may also use the Remove button to delete a hot key that you have created. If the key came pre-assigned with the workstation, the hot key will revert to the original assignment when you click remove.

...SHOW TOOLBARS IN A SERVICE?

Many services, such as Time and Sales, QuoteLine, and MarketWatch have their own floating toolbar that can be shown or hidden. The toolbar is visible only when the selected service is active. Toolbars are not available in pop-up applications. To show a toolbar in a service, first you must turn on the feature:

Click **View > Allow App Toolbars** from the menu bar. Once this feature is set you can show a display's toolbar by right-clicking in the display and select **Toolbar** from the menu.

...OPEN A REUTERS NAVIGATOR?

If your workspace does not contain a Reuters Navigator, click  on the main toolbar to open as a pop-up.

...FIND INFORMATION WITH THE REUTERS NAVIGATOR?

To access information, double-click on a folder name, then double-click on the information you want to display.

Folder Name	Description
News	A top down cross-section of the most popular stories from Reuters News. Organized for Traders and Portfolio Managers/Analysts. Includes hot news, trading news, economic data, fundamentals, corporate actions, cross market, and global news as well as new folders for Equity Guides, Earnings, Sector News, M&A/Corporate Actions/IPOs, Cross Market News and Economic News.
Equity Markets	Contains all equity market breadth services (TRIN, VIX, Call-Put Ratio, Table of Indices etc.) and single stock rankings (Gainers, Losers, Gap, New 52 week High/Low, etc.).
Trading/Charting Analysis	All key trading analytics and charts, such as, VWAP, Time & Sales, Order Indications, Advertised Trades, Volume Summary, Short Interest, Options, etc.
Options Analysis	Single-click access to a pop-up OptionWatch, implied volatilities for underlying or individual option symbols, buy write, married put, theoretical values and historical volatilities.
Fundamentals/Performance Analysis	All key company data, such as, Balance Sheet, Income Statement, Institutional Holders, Earnings Estimates, Insider Trading, Earnings/Revenue/Dividends, Total Returns, Corporate Actions, etc.
Main Menu	Quick access to the MetaStock QuoteCenter Analytics Menu.

...SEARCH FOR ITEMS/COMMANDS USING THE REUTERS NAVIGATOR



1. In menu or toolbar mode, right-click on the Reuters icon found in the upper left corner of the Reuters Navigator.

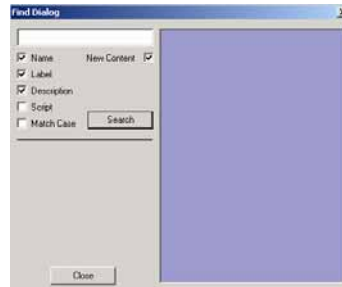
2. Select Find... from the menu
3. Type keyword in box.
4. Using check boxes, select where to search
5. Click Search



...FIND NEW ITEMS/COMMANDS ADDED TO REUTERS NAVIGATOR

1. In menu or toolbar mode, right-click on the Reuters icon found in the upper left corner of the Reuters Navigator.
2. Select **Find...** from the menu
3. Click on the **New Content** check box
4. Click **Search**

New data and commands that have recently been added to the Reuters Navigator will be listed in the area on the right. New items can be dragged to your Personal Navigator.



...CREATE A PERSONAL NAVIGATOR?



1. In menu or toolbar mode, click on the Reuters icon found in the upper left corner of the Reuters Navigator to open the menu.

2. Select **Create New Personal Navigator...** from the menu.
3. Enter a name for the new Personal Navigator in the box that appears, and click **OK**.
4. The **Setting up new Personal Navigator Editor** dialog appears. Enter the name for your Personal Navigator and click **OK**.
5. The Personal Configuration Editor dialog appears.
6. To add items, drag individual elements from the left, Reuters Navigator side to the **Personal Configuration** (right) side. Using this method, you can leave the commands and menus as is, or edit to your preference.

Personal Navigators are stored with your user ID on our central database.

For more information on customizing a Personal Navigator go to the online help

...ADD A DOUBLE CLICK ASSIGNMENT?

MetaStock QuoteCenter allows you to quickly assign double-click actions to data fields. Double-click actions assigned to a data field will be universal for that field across all services. Two methods are available to assign a double-click:

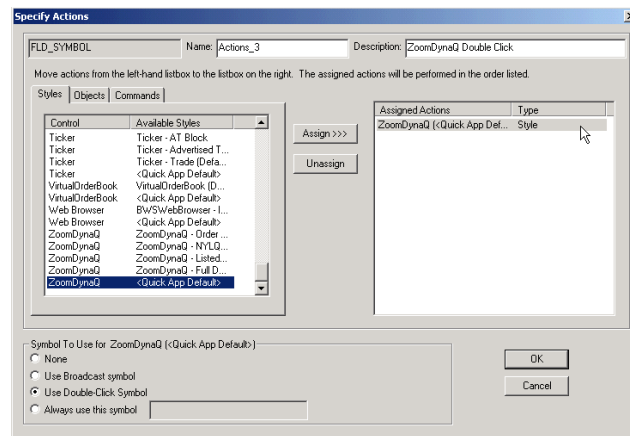
Assign from a Reuters Navigator

1. Right-Click on the Reuters Navigator command that you want to assign
2. Select Assign Double-Click...
3. Pick a data field on which to make the assignment
4. Click OK with the assignment has been completed

Assign from a Data Field

In our example, we will add a double click assignment to the symbol field in a MarketWatch display that will launch a ZoomDynaQ display.

1. Within a MarketWatch, right click on the symbol field and select **Assign Double-Click for: Symbol (FLD_SYMBOL)**. The menu item is context-sensitive and will indicate which field you have selected. If the field already has an assignment, you will be given the option to delete the current assignment.
2. The **Specify Actions** dialog appears. Select an action **Style** or **Command** and click the **Assign >>>** button. In the example shown below the Style **ZoomDynaQ Quick App** has been selected.




3. Select which symbol to use by when you double-click.
 - **Use Broadcast symbol** will use the symbol in the Broadcast box.
 - **Use Double Click Symbol** will use the symbol on which you double-click. This is the default option and will be used if not other selection is made.
 - **Always use this symbol** allows you to set a specific symbols to use.
4. Click **OK** to complete the assignment.

...WORK WITH TEMPLATES?

Various services in MetaStock QuoteCenter show a collection of data items known as the template. Many services have templates that can be edited including MarketWatch, IndexWatch, Quoteline and DynaQ. Templates can be saved under user-defined names and reused in any compatible MetaStock QuoteCenter.

• Edit a template

You can add or delete data fields from an existing template at any time.

1. Right-click in a display that uses the template feature.
2. Select **Template > Select Fields**. The **Template Editor** dialog appears.
3. Edit the **Select fields** column using the **Find** feature.
4. To add fields, using the Search box, type the name of the field you wish to add (such as Bid size). Click **Find**. A list of matching fields appears in the lower window. Double-click the field to select it.
5. To delete the field use the  arrow to remove from the template.
6. Click **OK** to complete.

• Save a new template

1. After making changes to your templates, right-click and select **Template > Save...** from the menu. The **Save Template** dialog appears.
2. Type a name for the template.
3. Click **OK**.

...WORK WITH SYMBOL LISTS?

A symbol list is a group of symbols created for use with multi-symbol services such as MarketWatch, NewsWatch, Quoteline and DynaQ. Only one version of the list needs to be maintained, regardless of the number of services in which the list is used. Therefore, edits to a symbol list in one service, change the list for all services where it is currently loaded. However, to permanently change the list, you must save it.

• Create a symbol list

1. Once symbols have been added to the service, right-click and select **Symbol List > Save** from the menu. The symbol list dialog will appear.
2. Type a name for the new symbol list you have just created. (Symbol Lists use the .BVL file extension)
3. Click **OK**. The name appears on the service's title bar and the list is saved to a file.

• Load a saved symbol list

Any symbols currently entered in the service will be replaced using this method.

1. Right-click in the service, select **Symbol List > Load...** from the menu. The **Load Symbol List** dialog appears.
2. Select the name of the symbol list you want to use in the display.
3. Click **OK**.

• Editing symbol lists

1. Select **Symbol List > Edit...** from the right-click menu. The **Edit Symbol List** dialog appears.
2. To add a symbol, move the cursor to the point where you wish to insert a symbol. Type the new symbol and press **Enter**.
3. To delete a symbol, select the symbol and press the **Delete** key.
4. Click **OK** when finished editing the list. **Note:** You do not need to type source info


• **Load Dynamic Symbol Lists** -You are now able to download symbol lists that are stored in the Central System Portfolio Database such as index constituents, industry groups and sectors

1. Right click and select **Load Chain** from the menu
2. Select either **Realtime Ranking Lists** or **Central System Indices and Portfolios**

...CREATE A VISUAL LINK

Visual Linking is a powerful tool used to get quick access to frequently used data or features. The Visual Linking wizard makes it easy to enhance the functionality of services and to perform tasks with a single click of a button. No programming experience is necessary as the wizard automatically writes the code for you. **It is important to note that setting a visual link will override double-click assignments for data in the display.**

In the following example, we will show you how to link from a MarketWatch to an Athena chart. You can set multiple links to any service in your workspace.

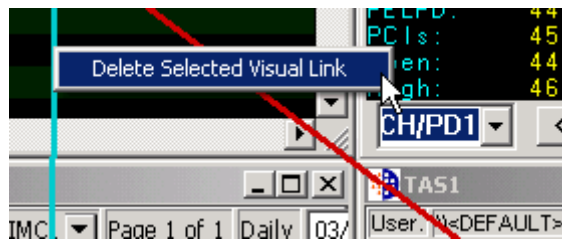
1. Click on the  icon located on the Main toolbar
2. Click and hold the left mouse button in the MarketWatch and drag the mouse into the Athena graph. Release the left mouse button.



3. The **Create a Link** dialog box appears indicating the type(s) of link available. Select a chart type and click on the **OK** button to complete.
Double-click on the symbol in MarketWatch. The mouse action sends the Visual Linking command to Athena to retrieve a chart for that symbol.

...DELETE A VISUAL LINK ?

1. From the Edit menu, select **Add/Delete Visual Link**.
2. The visual links are highlighted in red. Click on the link to be deleted. Press the Delete key on your keyboard. The selected link will be deleted.



...GET A QUOTE?

Type the vehicle symbol into the Broadcast or directly onto the QuoteLine service and press **Enter**. You must use a specific format when you enter vehicle symbols. The codes and format used are described below. The abbreviation 'cc' indicates the use of a country code. A list of country codes is available in the appendix of this guide.

Vehicle	Format	Example **
Equities		
Common Stock	cc;sym	us;KO
Class Stock	cc;sym.class	us;VIA.B
Equity Option	cc;sym<space> maturity+strike	us;LU EG
Preferred Stock with Series	cc;sym, cc;sym,series	de;POR, us;PCG,U
Rights	cc;sym"	us;VIA "V
Warrant with Series	cc;sym'	us;FLT' de;CBS'A
When Issued	cc;sym=	us;NKE=
Corporate Bonds		
Corporate Bonds	cc;sym% maturity	us;IBM% 13
Zero Coupon Bond	cc;sym% mat.%	us;GMA% 12%
Treasuries		
U.S. Treasury Note/Bond	cc@?ccmatT.RR	us@?us10yT.RR
Indices		
Index	cc;sym	us;OEX
Index Option	cc;sym<space>mat	gb;FTSE F4300
Vehicle	Format	Example
Indicator		
Bridge Indicator	cc&sym	us&ADVQ
Foreign Exchange		
Forex Spot	\$\$currency 1 +currency 2	\$\$HKDUSD
Futures/Options		
Commodity Forward	cc@sym>term	gb@AAD>90
Commodity Future	cc@sym +year+delivery	us@CL04N
Lead Month Future	cc@sym.1	gb@Z.1
Index Future	cc@sym+yr+del	xe@DX.Z xe@DX3Z
Option (expiring same month as future)	cc@sym+year+del+C or P+strike (C = call, P = Put)	us@NG04UC4700
Option (expiring in other month)	cc@sym	us@KC032XP800

The country code denotes the country of the independent vehicle. There is no country code for forex symbols. The country code (cc) is not needed for symbols of the country to which your terminal is set. For example, for a terminal set to US, KO is equivalent to us;KO.

EXCHANGE CODES

To view prices from an individual exchange you will need to append an exchange code to the end of the symbol. You must use a specific format: cc:sym_exchange id. As an example US;KO_M, will return a quote on Coca Cola on the Chicago Stock Exchange.

For a complete list of exchange codes, click **Help > Workstation Help** from the menu bar. From the **Contents** tab, select **Reference > Country and Exchange Information**.

...MONITOR SYMBOLS?

- **Add symbols-** to add symbols to MarketWatch, click on a blank symbol cell and enter the symbol
- **Delete symbols-**
 1. Within MarketWatch click on the symbol to delete.
 2. Right-click to show the menu
 3. Select **Symbol > Delete**.
- **Insert a symbol into the MarketWatch-** to insert a symbol between 2 symbols,
 1. Click on the symbol below where you want to insert.
 2. Right-click to show the menu.
 3. Select **Symbol > Insert**.
- **Save symbol lists**
 1. Within MarketWatch right-click and select **SymbolList > Save** from the menu. Please note, if Autosave on Shut Down is turned on, symbol lists will automatically be saved when you exit.

...LOAD SYMBOLS CHAINS INTO A MARKETWATCH?

You are now able to download symbol lists that are stored in the Central System Portfolio Database such as index constituents, industry groups and sectors via the right click menu, under **Load Chain -> Central System Indices and Portfolios**. These lists will always contain the most up-to-date list of symbols. Users can also download central system portfolios, available vehicles, option, future chains and OPRA codes. Type one of the codes below and press <shift + enter> to retrieve the chain.

..*portname* = loads central system portfolio
..*sym* = loads the available vehicles for that vehicle excluding options
..*#sym* = loads the OPRA codes for that vehicle
..**sym* = loads the full option chain for that vehicle
..*@sym* = loads the futures chain for that vehicle

To access central system portfolios outside your home country setting, use the following syntax:
..*cc!*portname i.e. ..!gb!ftse

...RETRIEVE NEWS?

The News services provide subscribers with access to real-time news through the Reuters Network using the NewsWatch service.

If a NewsWatch is open in your workspace, double-click on a headline to open and view the story.

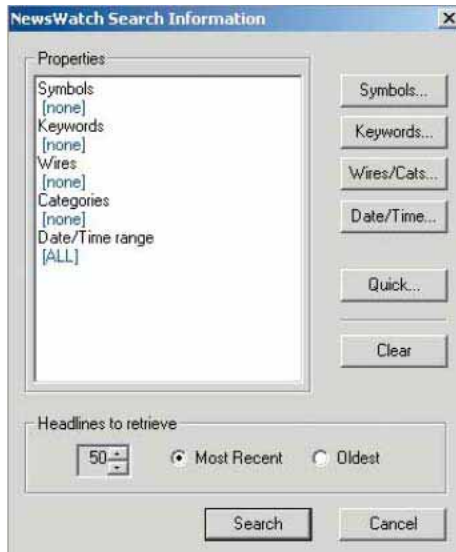
If a NewsWatch service is not open, click on the Quick App icon menu bar and select NewsWatch from the list or add the service to your workspace.

...RETRIEVE NEWS ON A SPECIFIC SYMBOL?

Click in the NewsWatch to make it active. Type a symbol, then press **Enter**. This retrieves the last 50 stories for that symbol.

...SEARCH FOR NEWS STORIES?

1. Within the NewsWatch, right-click and select **Search Wizard** to show the **Search** dialog.



Search by symbol

Click the **Symbols** button and enter a symbol or enter multiple symbols in the **Include/Exclude** columns or click the **Symbol List button** to select a saved list.

Search by keyword

To narrow a search to include or exclude keywords or phrases, click on the **Keywords** button and enter text in the **Search String** edit box. If you want to add more than one keyword, use the following Boolean operators - and or not. Use the asterisk (*) as a wildcard. For complete phrases use 'quotes' around the phrase.

Search by source

1. Click on **Wires/Cats...**
2. Double click on a source to show categories within the source.
3. Click a category, then **>>** button to search by a specific category.
4. Click **OK**.
5. Click **Search** to begin search. The latest 50 stories will be retrieved. The number of stories retrieved can be changed using the box in the lower left corner of the dialog box. After your stories are returned – to retrieve more, right-click and select **Get next batch**.

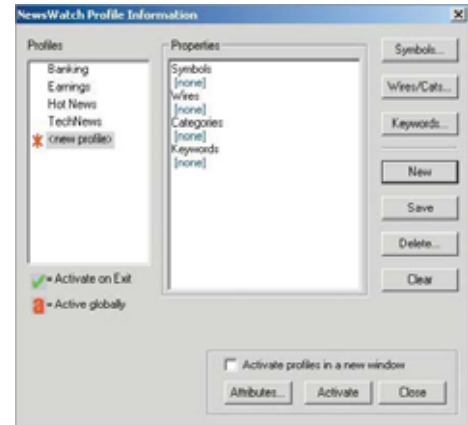
...SAVE NEWS SEARCHES (NEWS PROFILES)?

News profiles dynamically search for news stories based upon search criteria you select. Activate the profile when you want to do the search. You can build up to 30 unique profiles but **activate up to 10 at a time**.

Creating a new profile/search

1. Within a NewsWatch, right-click and select **Profiles > Profile Edit**.
2. Click the **New** button.
3. Select your criteria to search using the buttons for:
 - Symbols** – enter the company symbols you wish to profile or search
 - Wires/Cats...** – use to track news categories or particular news services.
 - Keywords** – enter keyword that will appear in either headlines or news stories you wish to track
4. Click **Save** and enter a name for the profile. Then click **OK**
5. Click **Done** to activate the profile later or click **Activate** to start it now.

Quick search on profile



...ACTIVATE AN EXISTING PROFILE

1. Within a NewsWatch, right-click and select **Profiles > Activate**.
2. Click on the profile name of choice.

Multiple profiles can be active at one time. To select more than one profile you must repeat steps 1 and 2.



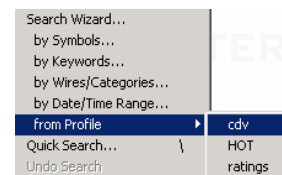
...DEACTIVATE AN ACTIVE PROFILE

1. Within a NewsWatch, right-click and select **Profiles > Deactivate**.
2. Click on the profile name to deactivate.

Click **Deactivate All** if more than one Profile is active and you wish to close all.

...PERFORM A QUICK SEARCH USING A PROFILE?

1. Within a NewsWatch, right-click and select **from Profile...**
2. Select the profile to search from the list.



...SEARCH USING THE NEWS EXPERT – FOR KEYBOARD INTENSIVE USERS

1. Within the NewsWatch display, type a backslash (\) to bring up the **News Expert** dialog.
2. Following the examples given in the dialog to create your own search without using your mouse.

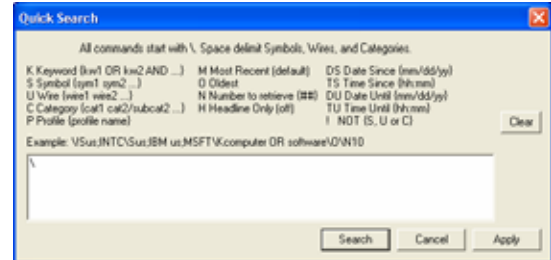
Quick search examples:

\greenspan – searches all headlines and stories for the word greenspan

\ctop – allows you to search on Reuters top news category

\uafx – brings back the last 50 Extel-AFX News stories

\pprofile1 – searches from profile named profile1



...ACCESS FIXED STORY NUMBERS?

News stories are assigned unique (fixed) story numbers. This lets you access specific news or statistical items using the same number every day. To access these stories, simply type the fixed story number while NewsWatch is the active service. A dialog will appear for your story number entry. Click [Search](#) when done.





Frequently used fixed story numbers

- List of All Menus (1)
- Fixed Story Numbers – All (913)
- Equities News (14)
- Key Commodity Markets News (4)
- Key Financial Markets News (3)
- Key Securities News (5)
- Key World Financial Events (55)
- NYSE/NASDAQ Stocks Review (1300)
- Reuters Top News – Front Page (133)
- Reuters Top News (134)
- Today in US Equities (150)
- Top News – Asia – Pacific (817)
- Top News – Australia (8904)
- Top News – Banking and Financial (625)
- Top News – Emerging Markets (778)
- Top News – Fund Management (696)
- Top News – India (739)
- Top News – Iraq (50)
- Top News – Media (699)
- Top News – Technology (698)
- Top News – Telecommunications (699)
- Top News Asian Equities (1302)
- Top News European Equities (1304)
- TOP of the TOPs (23)
- Factiva (135)
- Updates and Summaries (2)
- US Company News Update – TOP NEWS US Equities (**1305**)
- US Corporate Earnings – Daily (**433**)
- US Corporate Earnings – Hits and Misses – First Call (**159**)
- US Corporate Earnings – Hits and Misses – Multex (**160**)
- US Corporate Earnings – Weekly (**1301**)
- US Economic Calendar (**4697**)
- US Hot Stocks Highlights (**88**)
- US IPO Calendar (**7925**)
- US Stocks – Before/After the Bell (**1309**)
- World Stock Markets (**80**)

For a complete list of Fixed Story Numbers open story number **913**.

...IDENTIFY NEWS INDICATORS?

News indicators are shown in many different services within MetaStock QuoteCenter, such as MarketWatch, DynaQ, QuoteLine. Each indicator, signified by an N within a color-coded circle, provides you with additional information regarding the available stories. Double-click on the N to display news headlines.


	News available from entitled source
	News acknowledged
	News available from non-entitled source. When running 'Show All News alerts', the non-entitled news indicator will not overwrite an existing entitled
	News available – entitlement unknown
	Blank – No news from important sources

...GET A CHART?

There are several ways to access real-time and historical charts. First, there are many pre-formatted fundamental, economic and performance charts available using the Analytics display. These charts can be easily accessed using the Fundamental sub-folder found in the Fundamental/Performance Analysis folder in the Reuters Navigator.

Secondly, the Athena chart service lets you create charts for prices of real-time (intraday) and historical (interday) financial data. A single chart can contain graphs for unlimited symbols and studies using the load Symbol list function or by dragging a symbols list from another service. Athena also includes capabilities for tick charts, point and figure charts, semi-log or linear scaling and over 100 additional studies. By adding the Athena toolbar, charting data becomes very fast and easy.

...CREATE AN ATHENA CHART?

1. Using Quick App icon  found the main toolbar, select Athena.
2. Type a symbol directly into Athena and press Enter or you can add the Athena service to your workspace.

...ADD A STUDY TO A CHART?

1. Right-click on the chart to bring up the menu.
2. Select **Add Analysis...**
3. Choose type of study and which pane to locate study using the option buttons.
4. Click the **Next>** button.
5. Modify study properties, if required.
6. Click **Finish** to draw the chart.

...ADD A PREFORMATTED CHART TEMPLATE?

1. Right-click on the chart to bring up the menu.
2. Choose **Load Chart Template** to access popular chart layouts built for different market sectors.

...ADD MORE SYMBOLS TO MY CHART?

Within Athena type the plus sign (+) then the additional symbol (i.e. +GM)

...SAVE CHARTS, TEMPLATES, STUDIES OR PANES?

1. Right-click on chart to bring up menu.
2. Choose **Save**.
3. Choose from the **Save as type...** as required.
4. Open folder where you want to save.
5. Click **Save** to complete. Item will now be visible on the shortcut menu.

...SELECT DRAWING TOOLS?

1. Right-click on the chart to bring up the menu.
2. Select **Draw...** Choose type of tool to use.

...CHANGE CHART TIME RANGE?

1. With the Chart's Status Bar visible, type the new time range into the date boxes on the status bar.



2. Alternatively, double-click on the chart background and then select **Time Range** tab to make changes from the dialog box.

...ADD A TOOLBAR TO A CHART?

1. Select **View-> Allow App Toolbars** from the menu bar. This setting must be turned on only one time.
2. Click into your chart and right-click to display menu.

1. Select **Toolbar**.


The toolbar makes charting faster and easier. Hover your mouse over an icon to view the tool tips. These will familiarize you with the handy icons on the display bar. The toolbar can be docked to the chart by dragging its title bar to a side of the chart.

... SEND A SYMBOL TO MULTIPLE SERVICES AT SAME TIME?

Type a symbol into the Broadcast Box and click the GO button that is located in the upper left corner of the desktop.



...LOOK UP SYMBOLS?

Click  on the main toolbar. **LookUp** allows you to search for the following classes of instruments: Corporates, Commodities, Foreign Exchange, Indicators and Reuters Pages.

...GET FUNDAMENTAL AND PERFORMANCE DATA ON A COMPANY?

A compendium of fundamental data and valuation ratios on companies are available through MetaStock QuoteCenter. Using the Reuters Navigator, double-click on the **Fundamental/Performance Analysis** folder. Select from company fundamentals pages such as Earnings Estimates Analysis, Institutional Holdings, Insider Trading Summary, Annual & Quarterly Balance Sheet and Income Statements, Financial ratios, Liquidity ratios etc.

Additionally, this data is available by double clicking on data fields throughout the system. A list of these **Hot Links** fields is provided in the appendix of this guide.

...GET TRADING TECHNICALS?

A wealth of technical trading indicators is available. Using the Reuters Navigator, double-click on the **Trading/Charting Analysis** folder. Select from over 50 pages, such as technical summary, market summaries, market depth, VWAP, daily history etc.

...SET UP AN ALERT?

1. Right-click on your chosen security or data field and select **Alert** from the menu.
2. From the **Limit Alert** tab of the Alert Editor, enter the information for the alert.
3. Click the **Alert Information** tab and select the desired alert notification methods.
4. Click **OK** when done.

...GET NASDAQ LEVEL 2 DATA?

To see NASDAQ DepthQuote (Level2):

1. Right-click in the ZoomDynaQ display.
2. Select **Properties > Zoom DynaQ**, then click on the **Content** tab.
3. Select **Market Makers** as the protocol to display.

Data is available for an additional exchange fee.

...IMPORT DATA INTO EXCEL?

Easily access real-time, historical, and news information using the MetaStock QuoteCenter link to Excel. To enable the BTools macro, start Excel, click on **Tools**, then **Add-Ins**, then browse to the QuoteCenter directory.

The default path is C:\Program Files\Equis\QuoteCenter \XL_Files. Click on the file btools.xla. This will enable the macro to access information from MetaStock QuoteCenter. In Excel from the main menu click on **Financial Tools**. From this screen you can easily get real-time and historical information from MetaStock QuoteCenter.

In the BDDE Tools, what is the difference between period and days fields when retrieving historical data – ‘Periods’ apply to tick, minute, hour, weekly, etc. ‘Days’ is used with custom dates.

...GET TIME AND SALES?

Using the Reuters Navigator, select the **Trading/Chart Analysis** folder. Select any of the Time and Sales views set with various filters. You can also view dynamic Time & Sales by adding the TAS (Time & Sales) service to a workspace.

- See the house numbers in **Time & Sales for Canadian symbols** – ca;{sym}/tt/bs displays codes for the buying and selling brokers. Another display for Canadian stocks in Analytics is {sym}/VT.

...FIND ALL ISSUES FOR A COMPANY?

To see all classes of vehicles for a particular company, in an Analytics service type sym/**AV** (i.e. **IBM/AV**). In MarketWatch type **..sym** in a symbol cell and press shift+ enter

...FIND SPECIFIC INDUSTRY INFO?

Reuters supports both the S&P Industry Groups and Reuters defined groups. Open the Reuters Navigator folder **Index/ETF/Sector/Group Analysis**.

...FIND INDICATIONS OF INTEREST?

Enter a symbol in the broadcast box and click the Go button. Using the Reuters Navigator, double-click on the **Trading/Charting Analysis** folder, then the Order Indication/Advertised Trades sub-folder. Select from Order Indications/OT, All Special Indications, All Natural Indications, Historical Advertised Trades (21 days), Top Advertised Trades – Listed, Top Advertised Trades – OTC. Streaming indications of interest can be viewed in MarketWatch and Ticker.

...ADD WEBSITES TO A WORKSPACE?

If you have access to the Internet or a private Intranet, you can embed regularly used websites into your workspaces.

1. Add a WebBrowser to your current or new workspace.
2. Type the URL into the address line at the top of the display.
4. Click **Workspace > Save**

...CALCULATE VWAP?

- Realtime VWAP can be viewed in QuoteLine and MarketWatch using the VWAP field.
- Using the Reuters Navigator, double-click on the **Trading/Charting Analysis** folder.
 1. Double-click on the VWAP sub-folder to reveal a choice of VWAP with various filtered parameters.
- Using the TAS (Time and Sales) service...
 1. Right-click to bring up the menu.
 2. Select Properties -> Time & Sales..
 3. Click on Filters tab and set Start Time – End time to calculate VWAP between the period.
 4. To dynamically update VWAP during the trading day, set the Start Time and set no End Time by un-checking the tick box.

➔ Appendix -

COUNTRY CODES

Argentina	AR	India	IN	Poland	PL
Australia	AU	Indonesia	ID	Portugal	PT
Austria	AT	Ireland	IE	Romania	RO
Bahrain	BH	Israel	IL	Russia	RU
Bangladesh	BD	Italy	IT	Saudi Arabia	SA
Belgium	BE	Jamaica	JM	Serbia	CS
Bolivia	BO	Japan	JP	Singapore	SG
Botswana	BW	Jordan	JO	Slovak Republic	SK
Brazil	BR	Kenya	KE	Slovenia	SI
Canada	CA	Korea	KR	South Africa	ZA
Chile	CL	Latvia	LV	South Korea	KR
China	CN	Lebanon	LB	Spain	ES
Colombia	CO	Lithuania	LT	Sri Lanka	LK
Croatia	HR	Luxembourg	LU	Swaziland	SZ
Cyprus	CY	Malaysia	MY	Sweden	SE
Czech Republic	CS	Mauritius	MU	Switzerland	CH
Denmark	DK	Mexico	MX	Taiwan	TW
Ecuador	EC	Morocco	MA	Thailand	TH
Egypt	EG	Namibia	NA	Turkey	TR
Estonia	EE	Netherlands	NL	United Kingdom	GB
Finland	FI	New Zealand	NZ	United States	US
France	FR	Nigeria	NG	Uruguay	UY
Germany	DE	Norway	NO	Venezuela	VE
Ghana	GH	Oman	OM	Vietnam	VN
Greece	GR	Pakistan	PK	Zambia	ZM
Hong Kong	HK	Peru	PE	Zimbabwe	ZW
Hungary	HU	Philippines	PH		

HOT LINKS

DATA FIELDS AND DOUBLE-CLICK ASSIGNMENTS

Most dynamic data fields have a double click action assigned to them. For example, double-clicking on the Company Name field accesses a business description of that company and double clicking on the Last Sale field accesses a Technical summary. The listed below are the default actions for the most frequently used fields.

Column Heading	Actionable data
AEx	Dynamic Time & Sales
Ask	Market Summary
Ask Size	Dynamic Time & Sales
Ask Time	Dynamic Time & Sales
BEx	Dynamic Time & Sales
Bid	ZoomDynaQ
Bid + Tick	ZoomDynaQ
Bid Size	Dynamic Time & Sales
Bid Time	Dynamic Time & Sales
Btk	Dynamic Time & Sales
DAV10	Volume summary with 10, 30, 60 day average volumes
Div	Quick summary of dividends paid by company for the past 5 years
DivXDate	Quick summary of dividends paid by company for the past 5 years
DivYld	Price and dividend yield chart
EPS	Provides a 5 year table of earnings, dividends and revenues for stocks and long term capital gains, short term capital gains and dividends for mutual funds
Est	Shows First Call earnings estimates for the next 3 quarters and the next 2 years. PE for each estimate and percent change over recent time periods are also shown
FRQ	Quick summary of dividends paid by company for the past 5 years
High	Historical data navigation menu
IAD	Quick summary of dividends paid by company for the past 5 years
Inside	ZoomDynaQ
Inside Size	ZoomDynaQ
Last Sale	Technical Summary provides an overview of technical data for the selected vehicle
Last/Info	Technical Summary provides an overview of technical data for the selected vehicle
LEx	Technical Summary provides an overview of technical data for the selected vehicle
LHi	Monthly chart
LLo	Monthly chart
Low	Historical data
MCap	Corporate fundamental profile
Mid	ZoomDynaQ
Open	Market Summary
PD.close	Historical data
PE	High low price and p/e ratio chart
PYE	Provides a 5 year table of earnings, dividends and revenues for stocks and long term capital gains, short term capital gains and dividends for mutual funds
Shares	Corporate fundamental profile
Size	Dynamic time & sales with time, last size and exchange
Tick	Technical Summary provides an overview of technical data for the selected vehicle
Time	Technical Summary provides an overview of technical data for the selected vehicle
Volume	Volume summary with 10, 30, 60 day average volumes
YHi	One year chart with 10, 50 and 200 day moving averages
YLo	One year chart with 10, 50 and 200 day moving averages
YTD PCT	Year-to-Date indexed price performance chart
%ch	Technical Summary provides an overview of technical data for the selected vehicle
%chg3m	Three month indexed price performance chart
%chg6m	Six month indexed price performance chart

Note: To see what double-click assignments are set; click **Tools -> Double-click Assignment...** from the menu bar.

SYMBOL STATUS INDICATORS

	Alert set, not broken
	Alert set, broken, but not currently broken
	Alert equivalent
	Alert broken on the upside
	Alert broken on the downside
	Buy imbalance
	Closed – not open for trading
	Fast market or not firm
	Gapped
	Gap up- the opening trade is at least 5% plus 0.10 higher than the previous day close. Value shown is the percentage increase of the opening price compared to the prior day close.
	Gap down- The opening trade is at least 5% plus 0.10 lower than the previous day close. Value shown is the percentage decrease of the opening price compared to the prior day close.
	Halted
	Lock (bid and ask are the same) or Crossed Market (bid is higher than the ask)
	Restricted
	Split today or stock dividend
	Sell Imbalance
	High relative volume – this indicator is triggered when volume exceeds the 10-day average volume by at least 7 times the amount.
	Ex-Dividend today

File Extensions

Alphabetical by file extension		Alphabetical by file type	
*.bfd	FormDisplay template file	*.cht	Athena chart file
*.bfl	Template file	*.pan	Athena pane file
*.bpf	Portfolio file	*.std	Athena study file
*.bvl	Symbol list	*.tpl	Athena template file
*.cht	Athena chart file	*.sec	BondWatch security file
*.pan	Athena pane file	*.bfd	FormDisplay template file
*.qtl	QuoteLine template file	*.bpf	Portfolio file
*.rpt	Signal applet report file	*.qtl	QuoteLine template file
*.sec	BondWatch security file	*.rpt	Signal applet report file
*.std	Athena study file	*.bvl	Symbol list
*.tpl	Athena template file	*.bfl	Template file
*.wkb	Workbook file	*.wkb	Workbook file
*.wks	Workspace file	*.wks	Workspace file

COMMONLY USED SYMBOLS

Indices

Dow Jones Industrials	US&DJI
Dow Jones Transports	US&DJT
Dow Jones Utilities	US&DJU
Dow Jones Composite	US&DJC
S&P 100	US;OEX
S&P Index (non fee liable)	US&OEX
S&P 500	US;SPX
S&P 500 (non fee liable)	US&SPX
S&P 400 Midcap	US;MID
S&P 600 Small Cap	US;SML
S&P Future to Spot Spread	US&SPD
S&P Growth/Barra Index	US;SGX
S&P/TSX Composite Index	CA;TSEA
S&P/TSX 60 Index	CA;TSP
S&P TSX Venture Composite Index	CA;JX
NYSE Industrials	US;NDA
NYSE Composite	US;NYA
Morgan Stanley Consumer Index	US;CMR
Morgan Stanley Cyclical Index	US;CYC
Morgan Stanley Emerging Markets Index	US&MS-EL
Morgan Stanley Europe	US&MS-EC
Morgan Stanley PacRim	US&MS-PC
Russell 1000	US;RUI
Russell 2000	US;RUT
Russell 3000	US;RUA
Value Line	US;VLE
Nasdaq Composite	US;COMP
Nasdaq Non-Financials 100	US;NDX
Nasdaq NMS Accumulation Stock Ratio	US&QACR
Schwab Small Cap	US&SSC
PHLX OTC 100	US;XOC
Nikkei Stock 225 (volume in 10k)	JP;NIKI
TOPIX First Stock Price (volume in 10k)	JP;IXJ
Toronto 35 Index	CA;TXO
TSE 100	CA;TOPX

Note: if your system is set to Default Country United States, you do not need to type the US prefix

Near Term Most Active Futures**Financial**

30 Day Federal Funds Pit CBOT	us@FF
30 Year T-Bond Electronic CBOT	us@ZB.1
30 Year US T-Bond Pit CBOT	us@US.1
Canadian Dollar Pit CME	us@CD.1
Dow Jones Industrial Avg Pit CBOT	us@DJ.1
Euro FX Pit CME	us@EC.1
Eurodollar 3 Month Electronic CME	us@GE.1
Eurodollar 3 Month Pit Only CME	us@ED.1
Fortune e-50 Index Future CME	us@FE.1
Japanese Yen Pit CME	us@JY.1
NASDAQ 100 Index CME	us@ND.1
Note US Treasury 10 Year Pit CBOT	us@TY.1
Reuters CRB (\$500 Multiple) Index NYBOT	us@CR.1
S&P 500 Index Day CME	us@@DSP.1
S&P 500 Stock Index CME	us@SP.1
Swiss Franc Pit CME	us@SF.1
Value Line Stock Index KCBOT	us@KV

Energy

Crude Oil, Light Sweet NYMEX	us@CL.1
Gas, Natural NYMEX	us@NG.1
Gasoline, New York Harbor Unleaded NYMEX	us@HU.1
Oil, Heating New York No. 2 NYMEX	us@HO.1

Metals

Copper, High Grade COMEX	us@HG.1
Gold, 100 Oz. COMEX	us@GC.1
Platinum NYMEX	us@PL.1
Silver, 5000 Oz. COMEX	us@SI.1

Global Futures

Euro Bund EUREX	xe@GBL.1
Eurodollar 3 Month Pit Only CME	us@ED.1
JGB LIFFE	gb@N.1
Long Gilt LIFFE	gb@R.1
Three Month Euribor LIFFE	gb@I.1

Future Month Code:

F: January G: February H: March J: April K: May M: June

N: July Q: August U: Sept V: Oct X: Nov Z: Dec

Example: US@ED03H for Eurodollar 2003 March Contract

Other Indices

America's Fastest Growing Companies Index	US;NDI
AMEX Airline Index	US;XAL
AMEX Biotechnology Index	US;BTK
AMEX Composite Index	US;XAX
AMEX Computer Hardware Index	US;HWI
AMEX Computer Technology Index	US;XCI
AMEX Disk Drive Index	US;DDX
AMEX Gold BUGS Index	US;HUI
AMEX Institutional Index	US;XII
AMEX Major Market Index	US;XMI
AMEX Natural Gas Index	US;XNG
AMEX Networking Index	US;NWX
AMEX North American Telecom Index	US;XTC
AMEX Oil Index	US;XOI
AMEX Pharmaceutical Index	US;DRG
AMEX Tobacco Index	US;TOB
CBOE Gold Index	US;GOX
CBOE Internet Index	US;INX
CBOE Mexico Index	US;MEX
CBOE Oil Index	US;OIX
CBOE Oil Index	US;OIX
CBOE Technology Index	US;TXX
DJ PSE Technology Index	US;PSE
Dow Jones Asian Titans Index	US&JAT
Dow Jones Global Titans Index	US&DJG
Dow Jones US Growth Index	US&SGR
Dow Jones US Large Cap Index	US&USL
Dow Jones US Mid Cap Index	US&USM
Dow Jones US Small Cap Index	US&USS
Dow Jones US Value Index	US&SVA
Inter@ctive Week Internet Index ADJ	US;IIX
Morgan Stanley Commodity Related Equity Index	US;CRX
Morgan Stanley Healthcare Payors Index	US;HMO
Morgan Stanley Healthcare Prod Co Ix	US;RXP
Morgan Stanley Healthcare Prov Index	US;RXH
Morgan Stanley Technology Index	US;MSH
NASDAQ 100 Index Tracking Stock	US;QQQ
NASDAQ Biotechnology Index	US;NBI
NASDAQ Computer Index	US;IXCO
NASDAQ Telecommunications Index	US;IXTC
New York Time	US&NYT
PHLX Box Maker Index	US;BMX
PHLX Gold and Silver Index	US;XAU
PHLX KBW Banking Index	US;BKK
PHLX Semiconductor Index	US;SOUS;X
S&P 500 Consumer Discretionary Sector	US&SPCOD
S&P 500 Consumer Staples Sector	US&SPCOS
S&P 500 Energy Sector	US&SPENE
S&P 500 Financials Sector	US&SPFIN
S&P 500 Health Care Sector	US&SPHLC
S&P 500 Industrials Sector	US&SPIND

S&P 500 Information Technology Sector	US&SPTEC
S&P 500 Materials Sector	US&SPMAT
S&P 500 Telecomm Services Sector	US&SPCOM
S&P 500 Utilities Sector	US&SPUTL
S&P 500/BARRA Value Index	US;SVX
S&P Banks Index	US;BIX
S&P Healthcare Index	US;HCX
SPDR S&P Dep Rpt Trades and Quotes	US;SPY

Note: if your system is set to Default Country United States, you do not need to type the US prefix

Cross Currency

Australia Dollar - US Dollar	\$\$AUDUSD
Canadian Dollar – US dollar	\$\$CADUSD
Euro - Japanese Yen	\$\$EURJPY
Euro - US Dollar	\$\$EURUSD
US Dollar - Canadian Dollar	\$\$USDCAD
US Dollar - Japanese Yen	\$\$USDJPY
US Dollar - Swiss Franc	\$\$USDCHF
US Dollar - UK Pound Sterling	\$\$USDGBP

Fixed Income Indices

U.S. Treasury Bond Prices & Yields			
<u>On The Run</u>	<u>Price</u>	<u>Ask Yield</u>	<u>Bid Yield</u>
3 Month T-Bill	@?TB3M	@?TB3MY	@?TB3MBY
6 Month T-Bill	@?TB6M	@?TB6MY	@?TB3MBY
2 Year Note	@?US2Y	@?US2YY	@?US2YBY
3 Year Note	@?US3Y	@?US3YY	@?US3YBY
5 Year Note	@?US5Y	@?US5YY	@?US5YBY
10 Year Note	@?US10Y	@?US10YY	@?US10YBY
30 Year Bond	@?US30Y	@?US30YY	@?US30YBY
<u>When Issued</u>	<u>Price</u>		
3 Month T-Bill	@?TB3W		
6 Month T-Bill	@?TB6W		
1 Year T-Bill	@?TB1W		
2 Year Note	@?US2W		
5 Year Note	@?US5W		
10 Year Note	@?US10W		
30 Year Bond	@?US30W		
3 Month T-Bill	@?TB3W		

Canadian Treasury Bond Prices & Yields		
	<u>Price</u>	<u>Yield</u>
5 Year	CA@?TCGB5Y	CA@?TCGB5YY
10 Year	CA@?TCGB10Y	CA@?TCGB10YY
30 Year	CA@?TCGB30Y	CA@?TCGB30YY

Global Benchmarks

UK GILT 8.00% 27/09/13	gb@?UK10Y
FRF OAT 4% 25/04/13	fr@?FR10Y
German BUND 3.75% 04/07/13	de@?GR10Y
ITALY BTP 4.25% 08/13	it@?IT10Y
ESP BM BOND 4.200% 30/07/13	es@?SP10Y
UK GILT 8.00% 27/09/13	gb@?UK10Y
Lipper General Muni Bond Index	&LP-GM
Lipper US Government Bond Index	&LP-GB

Money Markets

us@?PNCPL5D11	PREBON NY USD Commercial Paper
us@?PNED1M	PREBON NY USD Euro-Deposit
us@?PNDTFF1M	PREBON NY USD Federal Funds
us@?PNTRPON	PREBON NY USD Treasury Repo

Market Indicators

	AMEX	NYSE	NASDAQ
Advances	US&ADVA	US&ADVN	US&ADVQ
Declines	US&DECA	US&DECN	US&DECQ
Volume	US&VOLA	US&VOLN	US&VOLQ
Up Volume	US&UVOA	US&UVOL	US&UVOQ
Down Volume	US&DVOA	US&DVOL	US&DVOQ
Tick	US&TICA	US&TICK	US&TICQ
Trin	US&TRIA	US&TRIN	US&TRIQ
Unchanged	US&UNCA	US&UNCN	US&UNCQ
Trades	US&ATRD	US&NTRD	US&QTRD
Issues Traded	US&ISSA	US&ISSU	US&ISSQ

Note: if your system is set to Default Country United States, you do not need to type the US prefix

Getting Help

For additional help, call the Equis Customer Support Group at
1-801-270-3290

For online support go to:

<http://www.equis.com/Customer/>